

**Standard Specifications**

Bore size(mm)	10	16	20	25	32	40
Fluid	Air					
Action	Double acting					
Maximum Pressure	0.6					
Minimum Pressure	0.15	0.1				
Ambient and fluid temperatures	-10~60°C					
Repeatability	±0.1mm					
Effective gripping force [N] <sup>Note1</sup>	14	45	74	131	228	396
Pipe size	M5×0.8				Rc1/8	

Note1) Under 0.5MPa pressure and the clamping point distance is φ0mmφ(10~ 25) 80mm (32 / 40)

**Standard Specifications**

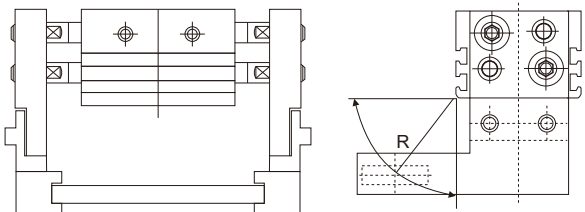
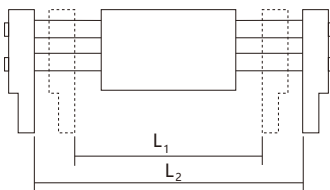
NMHL 2 - 16 D

Bore size

Opening/Closing stroke [mm]

Bore size	φ10	φ16	φ20	φ25	φ32	φ40
Nil	20	30	40	50	70	100
1	40	60	80	100	120	160
2	60	80	100	120	160	200

**Order itinerary/weight table**

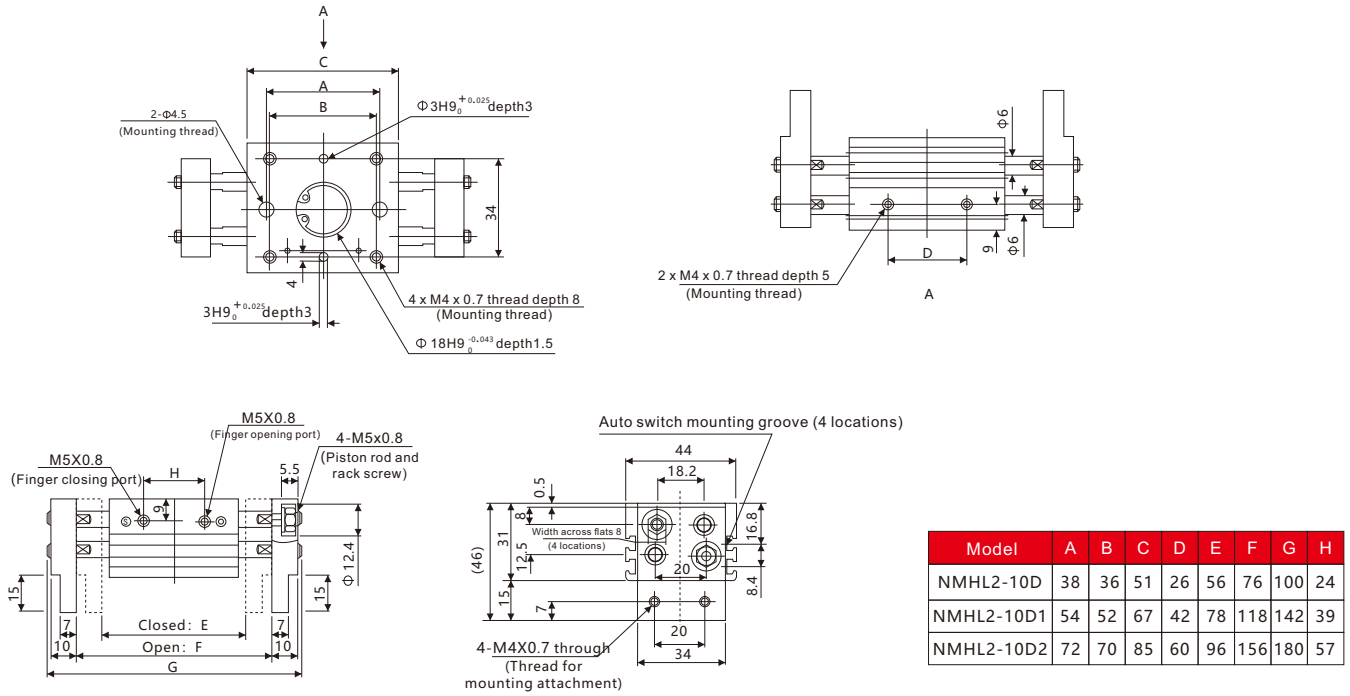


R:Gripping point distance [mm]

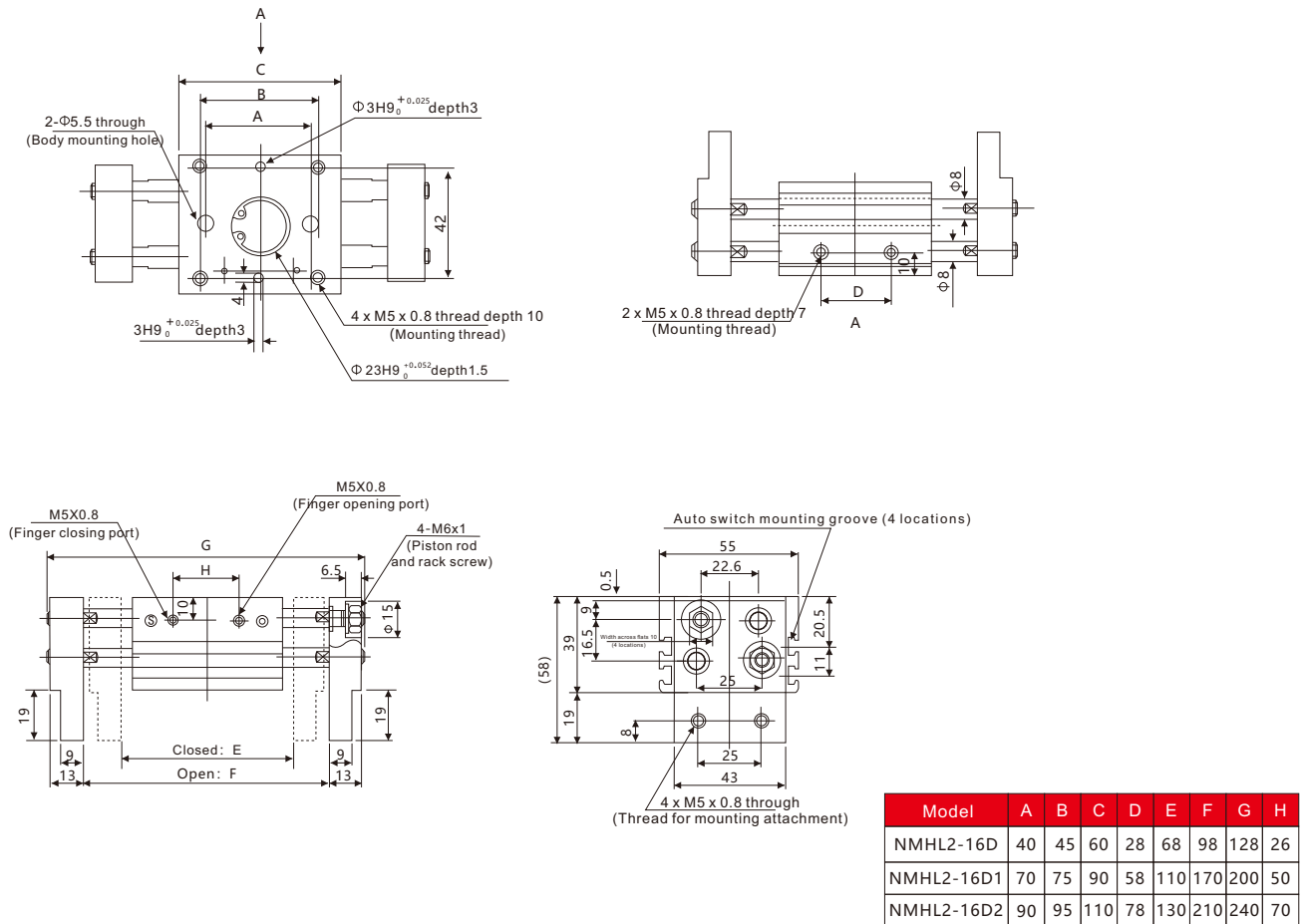
Model	Bore size (mm)	Max. operating frequency [c.p.m]	Opening/Closing stroke mm (L2-L1)	Closing width mm (L1)	Opening width mm (L2)	Weight g
NMHL2-10D	10	60	20	56	76	280
NMHL2-10D1		40	40	78	118	345
NMHL2-10D3		60	96	156	425	
NMHL2-16D	16	60	30	68	98	585
NMHL2-16D1		40	60	110	170	795
NMHL2-16D2		80	130	210	925	
NMHL2-20D	20	60	40	82	122	1025
NMHL2-20D1		40	80	142	222	1495
NMHL2-10D		100	162	262	1690	
NMHL2-25D	25	60	50	100	150	1690
NMHL2-25D1		40	100	182	282	2560
NMHL2-25D2		120	200	320	2775	
NMHL2-32D	32	30	70	150	220	2905
NMHL2-32D1		20	120	198	318	3820
NMHL2-32D2		160	242	402	4655	
NMHL2-40D	40	30	100	188	288	5270
NMHL2-40D1		20	160	246	406	6830
NMHL2-20D2		200	286	486	7905	

### Dimensions

#### NMHL2-10D□

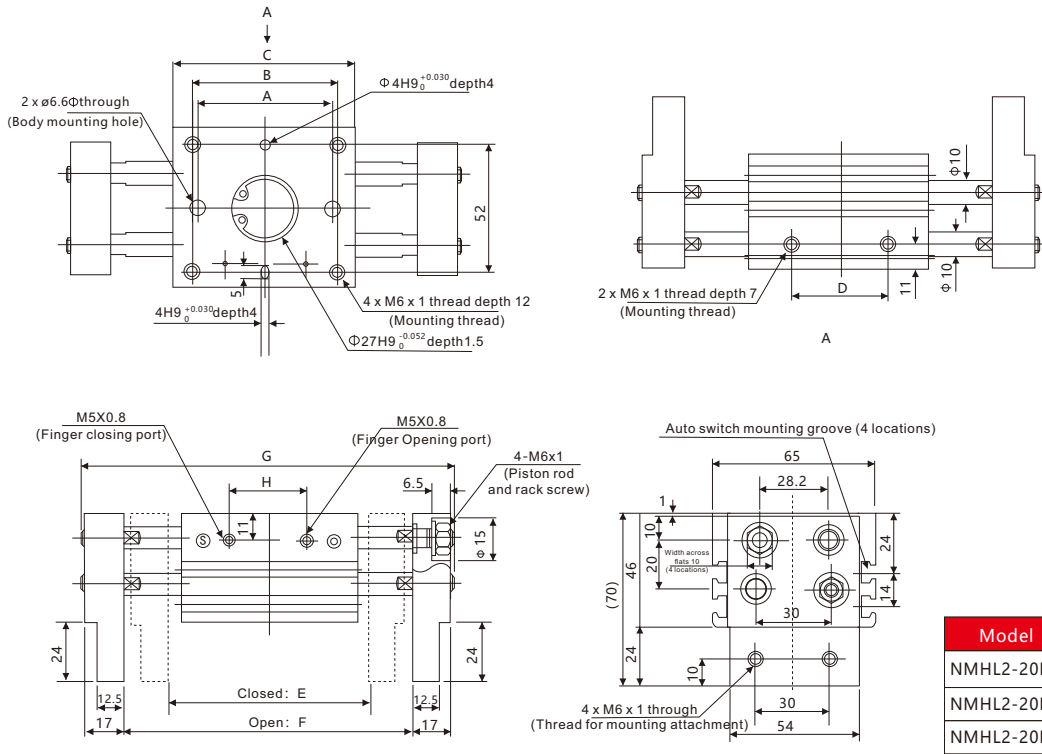


#### NMHL2-16D□



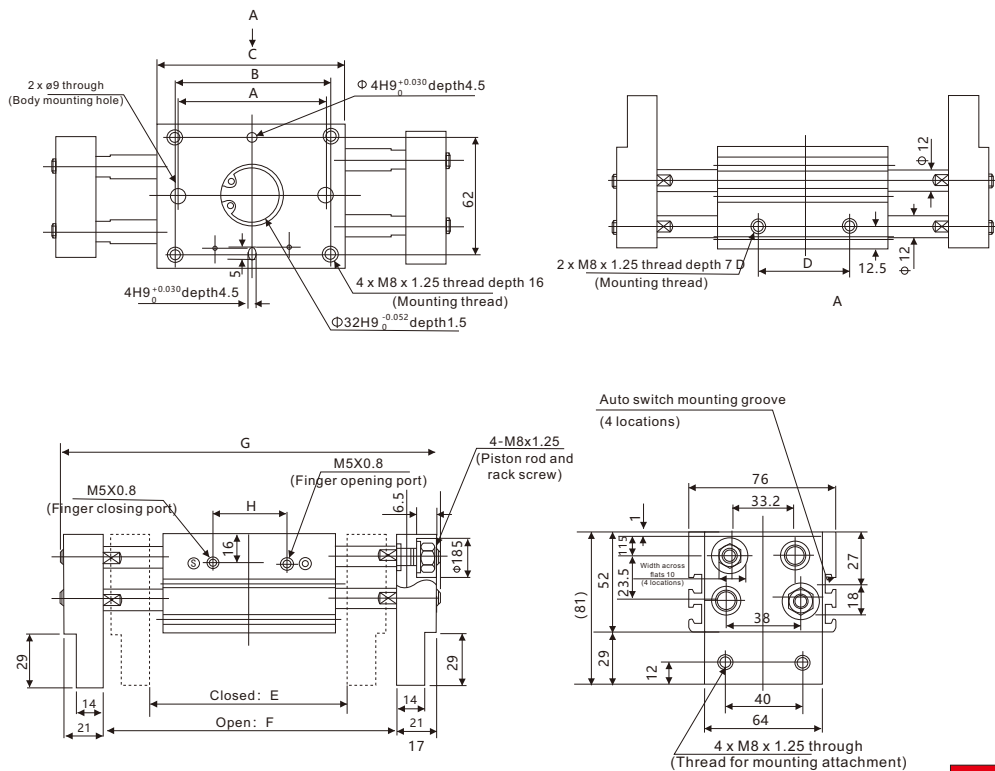
### Dimensions

#### NMHL2-20D □



Model	A	B	C	D	E	F	G	H
NMHL2-20D	54	58	71	38	82	122	160	32
NMHL2-20D1	96	100	113	80	142	222	260	68
NMHL2-20D2	116	120	133	100	162	262	300	88

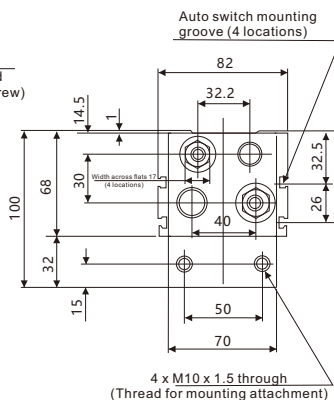
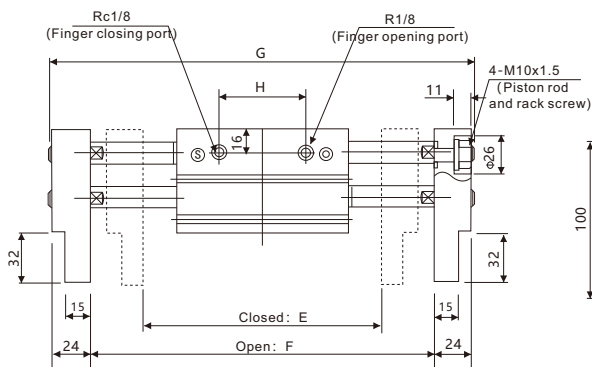
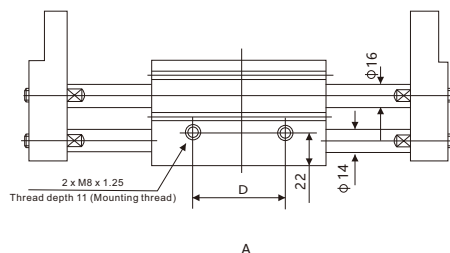
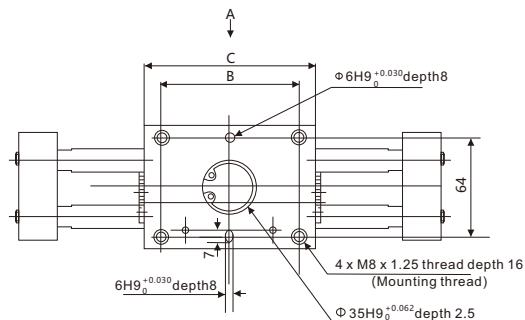
#### NMHL2-25D □



Model	A	B	C	D	E	F	G	H
NMHL2-25D	66	70	88	48	100	150	196	38
NMHL2-25D1	120	124	142	102	182	282	328	86
NMHL2-25D2	138	142	160	120	200	320	366	104

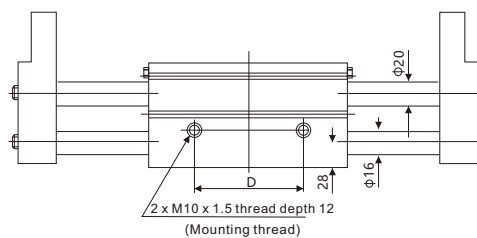
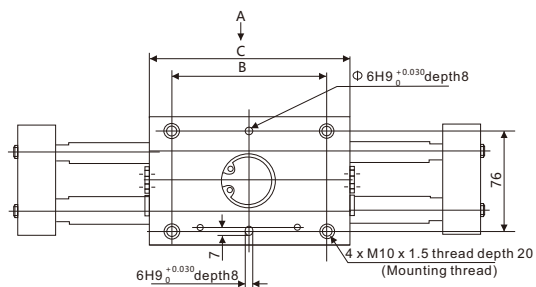
### Dimensions

#### NMHL2-32D□

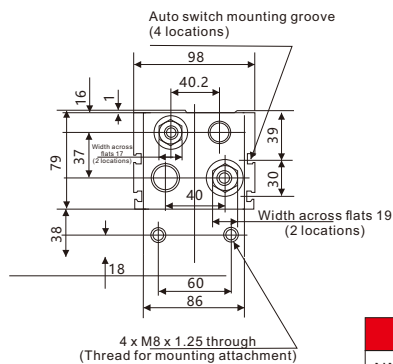
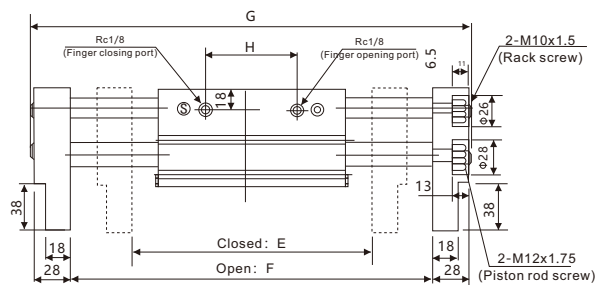


Model	B	C	D	E	F	G	H
NMHL2-32D	86	110	60	150	220	272	56
NMHL2-32D1	134	158	108	198	318	370	104
NMHL2-32D2	178	202	152	242	402	454	148

#### NMHL2-40D□



A



Model	B	C	D	E	F	G	H
NMHL2-40D	116	148	80	188	288	348	72
NMHL2-40D1	174	206	138	246	406	466	130
NMHL2-40D2	214	246	178	286	486	546	170